



Genesis Vertical Lift OPAL Model



unenclosed vertical platform lift



The Garaventa Genesis OPAL model is a reliable, cost effective accessibility solution for public buildings or private residences. This durable and easy-to-use lift is ADA compliant and suitable for indoor or outdoor applications requiring vertical transportation up to five feet.

The Genesis OPAL is a short rise vertical elevating system that can be installed directly on the floor or in a pit. The OPAL consists of a platform with 42" high sidewalls, a free standing upper gate, a platform mounted lower landing gate, a drive system and easy-to-use operating controls. The platform walls and the lower platform gate travel with the platform creating a barrier around the passenger. This ADA compliant lift can be installed with little or no site modifications. The OPAL is ideal for applications requiring vertical travel up to five feet.

Applications:

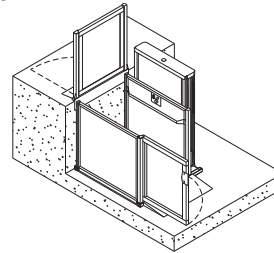
Suitable for indoor or outdoor applications in public buildings, schools, stages, churches or private residences.

Standard Features:

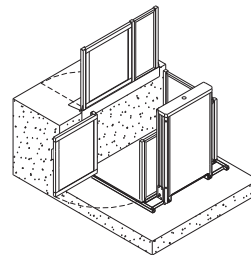
- Standard Platform - 940mm (37") x 1296mm (51")
- Under platform safety pan
- Straight through entry/exit configuration
- Audible Illuminated Emergency Stop/Alarm Switch
- Keyless operation
- Leadscrew Drive System
- Grabrail on platform side panel
- Easy to use directional control switches
- Upper and lower gates with internal gate closer

Optional Features:

- Hydraulic Drive System with manual lowering and auxiliary power system
- Mid-Size Platform: 940mm (37") x 1448mm (57")
- Large Platform: 1067mm (42") x 1600mm (63")
- 90° entry/exit configuration - a large platform is required (1118mm (44") x 1524mm (60"))
- Power gate operator
- Custom colors
- Electro-mechanical interlock
- Key switch on call stations and platform to limit use to authorized persons
- Choice of stationary loading ramp or platform mounted automatic folding ramp for installations without a pit
- Electrical disconnect



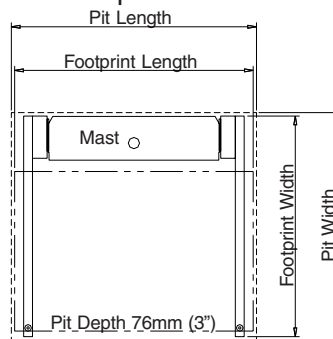
Straight Through Configuration



90° Configuration

Footprint/Clearance Dimensions

Platform Size	Straight Through Entry / Exit			
	Footprint Width	Footprint Length	Pit Width	Pit Length
Standard	1258mm [49 1/2"]	1294mm [51"]	1322mm [52"]	1332mm [52 1/2"]
Mid-Size	1258mm [49 1/2"]	1446mm [57"]	1322mm [52"]	1484mm [58 1/2"]
Large	1436mm [56 1/2"]	1598mm [63"]	1500mm [59"]	1636mm [64 1/2"]
90° Entry / Exit				
Large	1436mm [56 1/2"]	1598mm [63"]	1455mm [57 1/4"]	1681mm [66 1/8"]



*If a pit is used, recommended depth is 3"
Pit width and length include running clearances



Technical Information:

Platform:

Standard Platform Dimensions - 940mm (37") x 1296mm (51") straight through configuration

Rated Load: 340 kg (750 lbs.)

Leadscrew Drive System

(Standard): 0.75 H.P. motor drives a 1" ACME screw lifting the platform at 2.7 meters (9') per minute.

Hydraulic Drive System

(Optional): 3 H.P. 24VDC hydraulic motor lifts the platform at 5.2 meters (17') per minute.

Power Requirements:

The mains power requirement for both drive systems is 120 VAC, 50/60 HZ on a dedicated 20 Amp circuit.

Finishes:

Steel panels and framework are finished with electrostatically applied baked fine textured Satin Grey paint. The panels, gates and mast are framed with champagne anodized aluminum extrusions.

Note: The approval for public building use of unenclosed platform lifts varies depending on codes and the type of application. Contact your local Garaventa representative for more information regarding codes in your area.

Call today for the Genesis OPAL Design & Planning Guide

Garaventa Accessibility

PO Box 1769,
Blaine WA 98231-1769
7505 134A Street,
Surrey, BC, Canada V3W 7B3

Phone: (604) 594-0422
Toll Free: 1-800-663-6556
Fax: (604) 594-9915

Web site: www.garaventa.ca

©2005 Garaventa. As we are continuously improving our products, specifications outlined in this brochure are subject to change without notice.